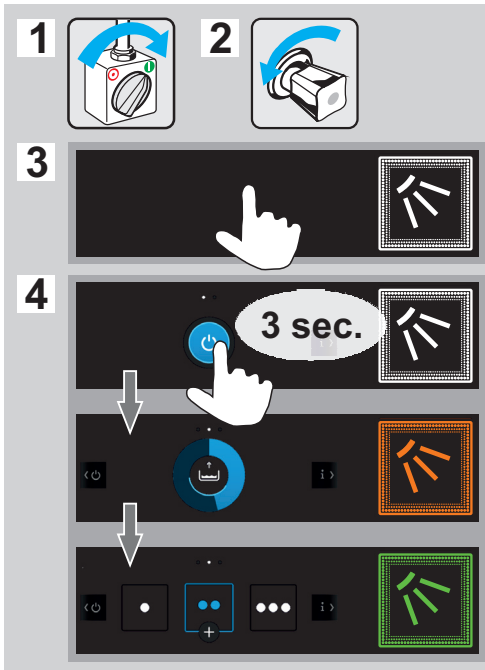
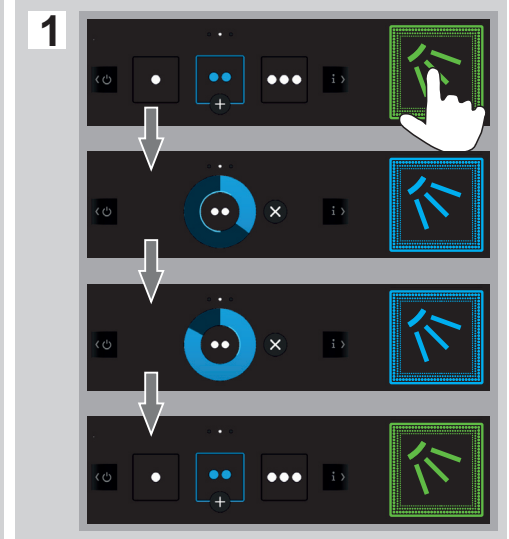


# UC-Serie

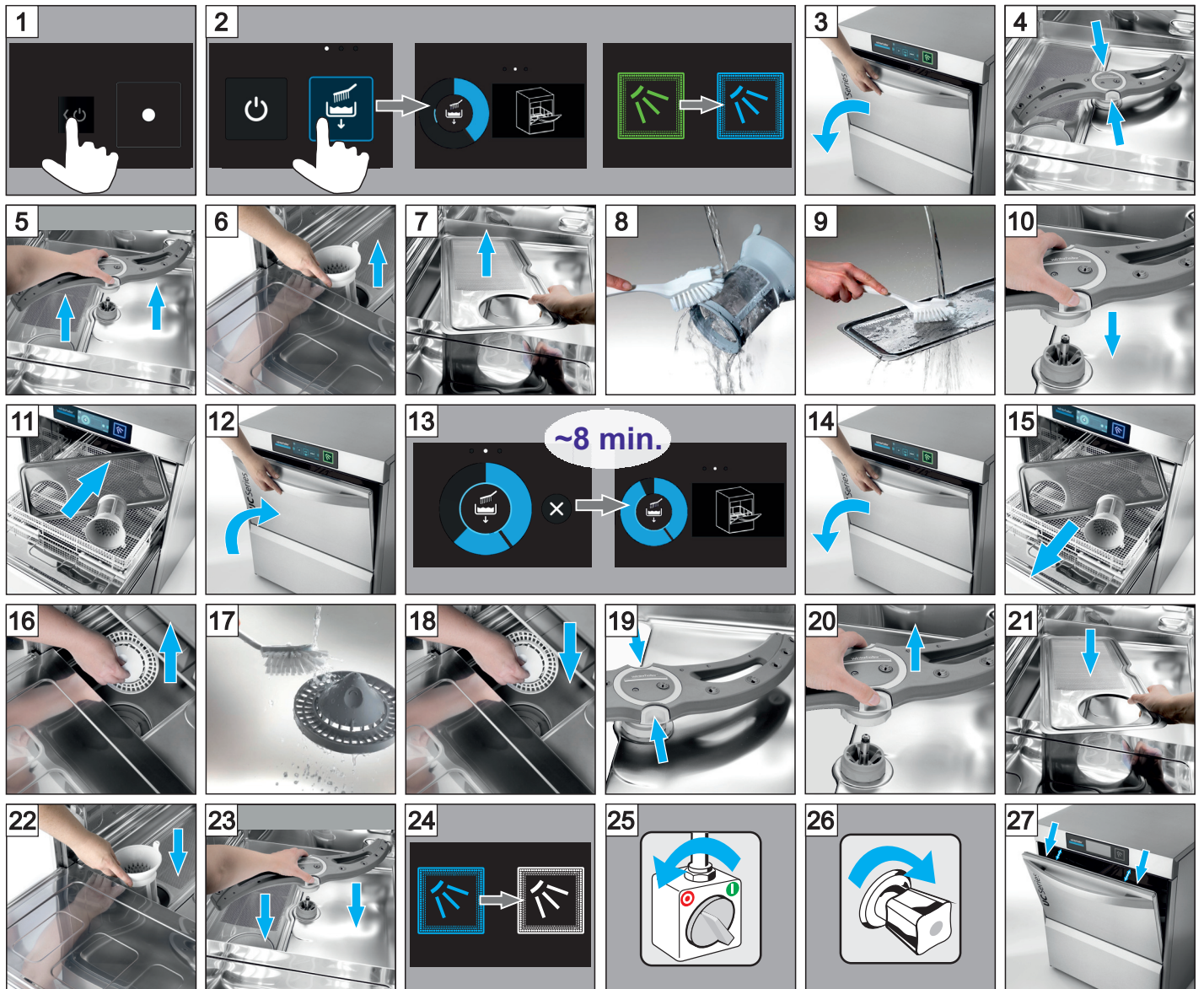
## Maschine einschalten



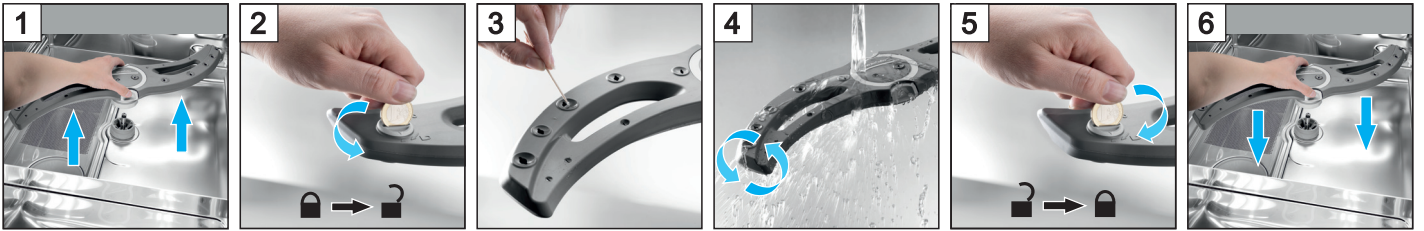
## Spülen



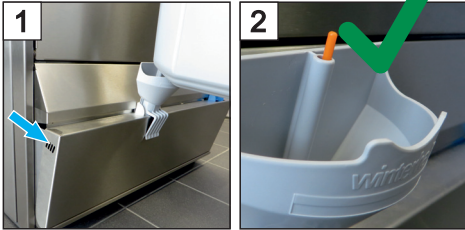
## Ausschalten + Reinigen



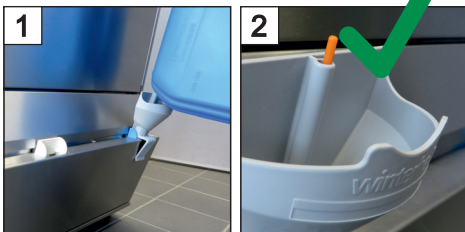
## Spülfelder reinigen



### Reiniger nachfüllen



### Klarspüler nachfüllen



### Kanister tauschen



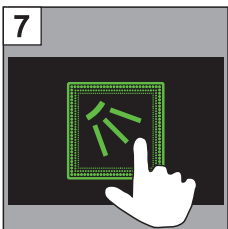
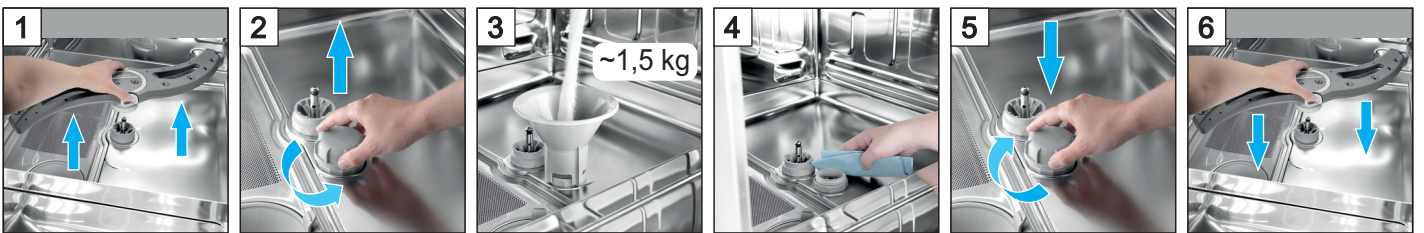
schwarz



blau



### Salz nachfüllen



### Bei Maschinen ohne Enthärter: TE-/VE-Patrone wechseln



Mehr Informationen:  
Siehe Betriebsanleitung  
[www.winterhalter.com/download-centre](http://www.winterhalter.com/download-centre)



Winterhalter Deutschland GmbH  
88074 Meckenbeuren  
Tel. 07542 402-0  
Fax 07542 402-5187  
[info@winterhalter.de](mailto:info@winterhalter.de)  
[www.winterhalter.de](http://www.winterhalter.de)